

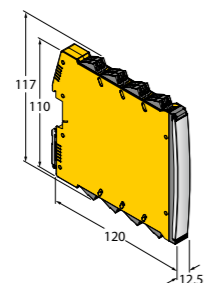
IM12 – Types and Features

Ident-No.	Type code	Description
7580048	IM12-DI03-1S-1NAM1R-0/24VDC	1-channel isolating switching amplifier with relay output, NAMUR-Repeater
7580052	IM12-DI03-1S-1NAM1T-0/24VDC	1-channel isolating switching amplifier with transistor output, NAMUR-Repeater
7580028	IM12-DI03-1S-2R-S/24VDC	1-channel isolating switching amplifier with relay output, splitter function or alarm output
7580032	IM12-DI03-1S-2T-S/24VDC	1-channel isolating switching amplifier with transistor output, splitter function or alarm output
7580036	IM12-DI01-2S-2R-0/24VDC	2-channel isolating switching amplifier with relay output
7580040	IM12-DI01-2S-2T-0/24VDC	2-channel isolating switching amplifier with transistor output
7580044	IM12-DI01-2S-2PP-0/24VDC	2-channel isolating switching amplifier with push-pull output stage
7580333	IM12-AI01-1I-1IU-H0/24VDC	1-channel HART® isolating transducer
7580321	IM12-AI01-1I-2IU-H0/24VDC	1-channel HART® isolating transducer with splitter function
7580325	IM12-AI01-2I-2IU-H0/24VDC	2-channel HART® isolating transducer
7580421	IM12-AO01-1I-1I-H0/24VDC	1-channel HART®-output analog signal isolator
7580425	IM12-AO01-2I-2I-H0/24VDC	2-channel HART®-output analog signal isolator
7580527	IM12-TI02-1TCURTR-111R-C0/24VDC	1-channel universal temperature transducer with current output and limit value
7580532	IM12-TI02-2TCURTR-2I-C0/24VDC	2-channel universal temperature transducer with current output
7580534	IM12-TI01-2RTDR-2I-C0/24VDC	2-channel temperature transducer with current output
7580225	IM12-FI01-1SF-111R-C0/24VDC	1-channel frequency transducer with current output and limit value
7580229	IM12-FI01-2SF-2I-C0/24VDC	2-channel frequency transducer with current output
7580622	IM12-CD01-2R-1U-0/L	1-channel relay coupler up to SIL3
7580610	IM12-PS02-UI-UIR-PR/24VDC	DIN rail power supply unit for power bridge modules

Devices with power rail and cage clamp terminals are optionally available



Dimensions



Technical data

Operating voltage	10...30 VDC
Suitable for use in safety circuits up to	SIL 2 acc. to IEC 61508
Dimensions	12.5 x 112 x 110 mm
Application areas	II 3(1)G / II 3G(1)D
Explosion protection type	Ex ec nC IIC T4 Gc, Ex ec IIC T4 Gc
Ambient temperature	-25...+70 °C

Availability/Reliability

- Transparent cover
- High channel density**
- 4 Connection possibilities on each side
- Easily mounted**
- Power supply via optional power rail

Over 30 subsidiaries and 60 representatives worldwide!



Your Global Automation Partner

IM12 Interface Series



Interface Series IM12

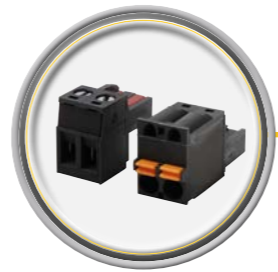
Interface devices are the true all-rounders in the control cabinet. They combine protecting, isolating, converting and supply tasks in the smallest space. A further major challenge are the requirements in standards. In this environment, the users expect reliability, precision and safety.

Turck sets a new standard in the field of safety-barriers and analog-signal isolators with the new IM12 interface device series. Fast and precise signal processing in the smallest space, reliable supply of the connected instrumentation and long maintenance-free operation are the most important criteria in the selection.

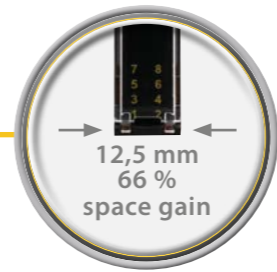
The IM12 series sets standards in many respects. The devices were developed according to the current norms and standards, and are the latest interface platform on the market. You therefore benefit from investment security and availability for a long period of time. The devices of the IM12 series are designed for processing of switching, NAMUR, frequency, current, voltage and resistance signals.



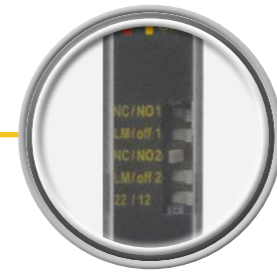
Clear signalling acc. to NE44



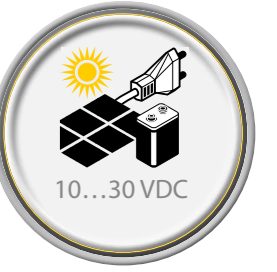
Screw or cage clamp terminals



- Width 12.5 mm
- 4 terminal strips
- Up to 66 % space gain



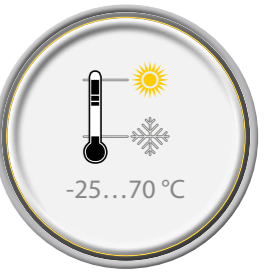
- Simple operation
- DIP switch
- Parameterizable via FDT/DTM



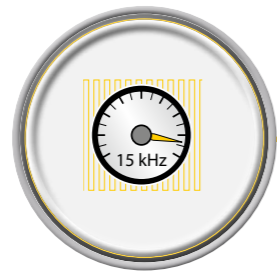
Wide power supply range



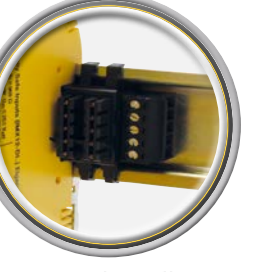
Best total performance at 40 °C for analog signal isolators



Wide temperature range



Fastest isolating switching amplifier up to 15 kHz



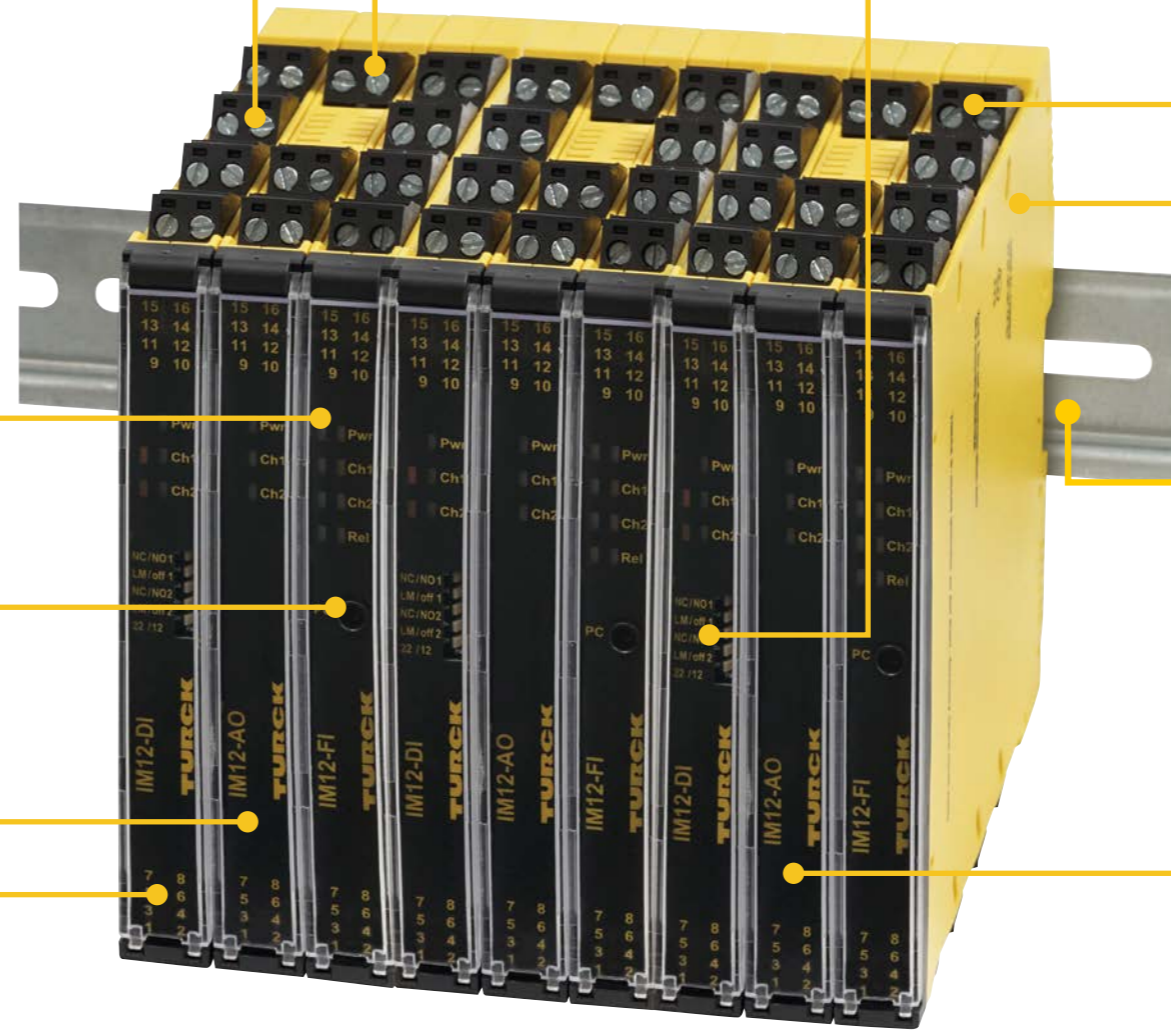
Power rail + Collective fault signal optional



Independent of mounting position -25...+70 °C



Use in ATEX zone 2



50 years
Interface
technology

Reliable

Turck builds on many years of experience in the field of interface technology. The IM series combines this experience with state-of-the-art technology. We offer an excellent basis for securing your investments, also in the long term and under changed market conditions.



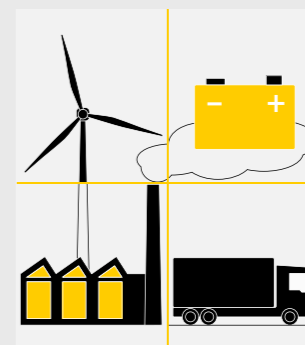
Global

Turck is a globally operating company, thus fulfilling requirements of international markets. We offer worldwide approvals, and thus ensure the applicability of devices in different systems.



Safe

Safety first – is a maxim at Turck. With the IM12 series, we want to contribute to your system security. All devices have been developed and manufactured in accordance with the requirements of the IEC61508 and can be used in safety circuits up to SIL2.



Flexible

No application is similar to the other. This provides a high degree of adaptability of the instrumentation. With diverse functionality and a wide voltage range of 10 to 30 VDC, the IM12 series is tailored to these requirements.